

SUSTAINABILITY & HISTORIC PRESERVATION

Neighborhood Preservation

Sarasota County supports the preservation of existing neighborhoods. Staff of the County's Neighborhood Services Division assists and encourages residents to participate actively in their neighborhoods to help preserve and enhance their quality of life. Staff of the County's History Center work with property owners who wish to historically designate their homes. According to a study recently completed by the University of Florida, "As sustainable development becomes an increasingly significant strategy to address growth pressures, the proximity of historic neighborhoods to the central business district and other amenities conveys additional benefits."
Contributions of Historic Preservation to the Quality of Life in Florida.



Historic Districts exist throughout the nation and serve to reinforce the characteristics of many different kinds of neighborhoods. This photograph provides an early view of Oak Street located in Laurel Park Historic District.



Old Miakka School

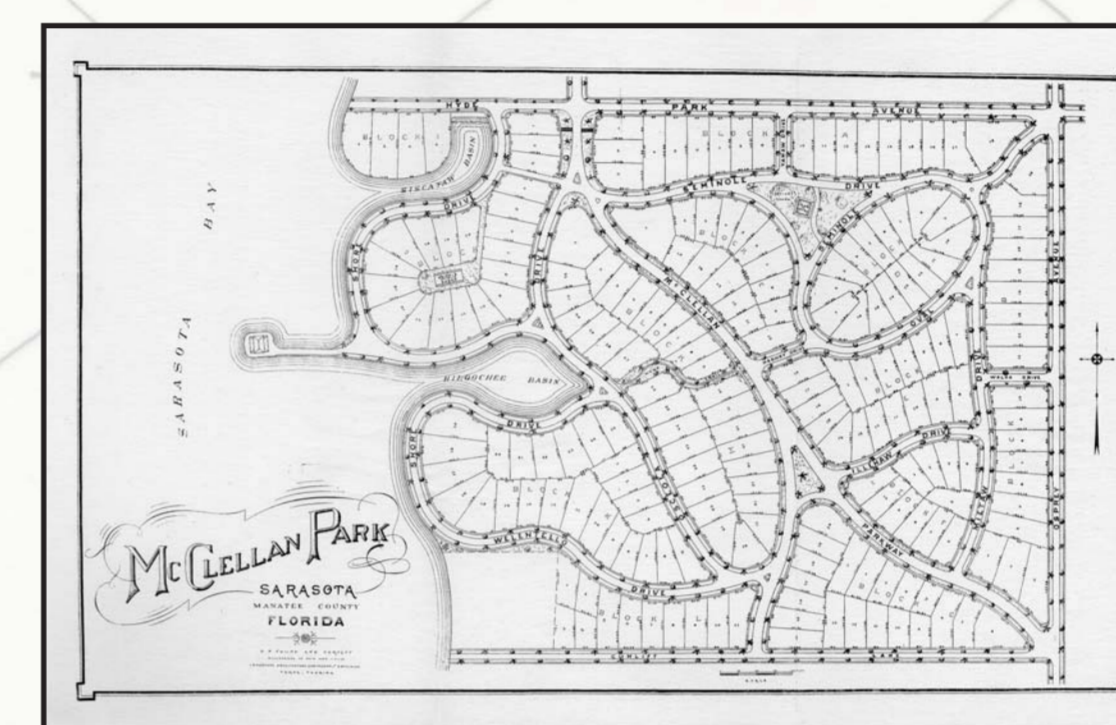


Ringling Plaza Shopping Center



McClellan Park Clubhouse

"Among the benefits associated with preserving older and historic neighborhoods are the higher percentage of affordable units as compared to new developments and the proximity to work, school, shopping, and public transit." *Donovan Rypkema 2002*



Plan for McClellan Park

When creating McClellan Park, Katherine and Daisietta McClellan provided Sarasota with a new style of development. Advertised as "Sarasota's Garden Spot," the 1916 subdivision offered roadways curving over gently sloping land, paved sidewalks, shade trees and flowering shrubbery. Community amenities included a clubhouse and tennis courts. Over the years this neighborhood at the southern end of Orange Avenue has been built out. The clubhouse still stands at the core of the neighborhood, not as the original tea room but as The School In The Park, a tutoring center for middle and high school students.



Examples of the houses found in the Burns Court historic district.



"...Since antiquity is relative and gets more antique day by day even our newest communities are fascinated by the history of their settlement and the people who built it."
Carl Feiss, Board of Trustees, National Trust for Historic Preservation



1620 Wewa Drive, McClellan Park - Mikki Hartig, photographer

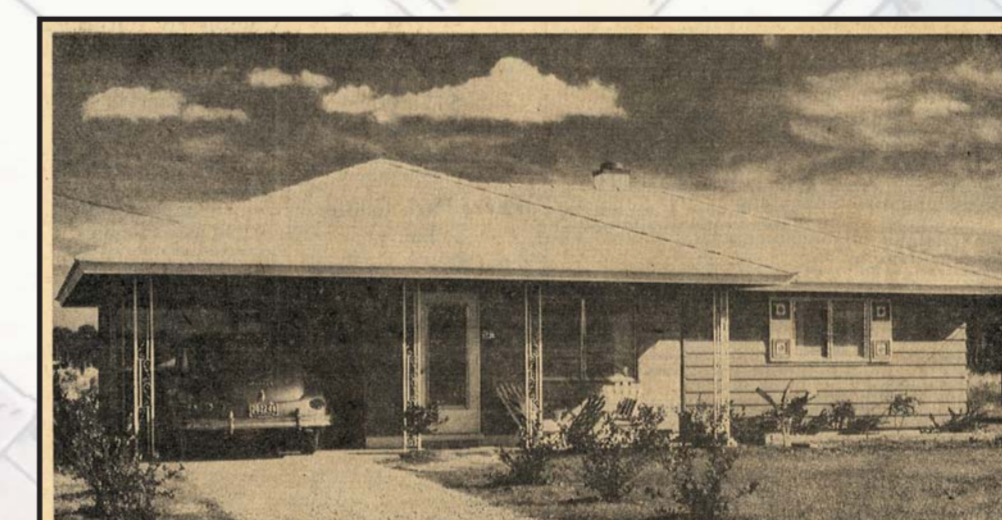
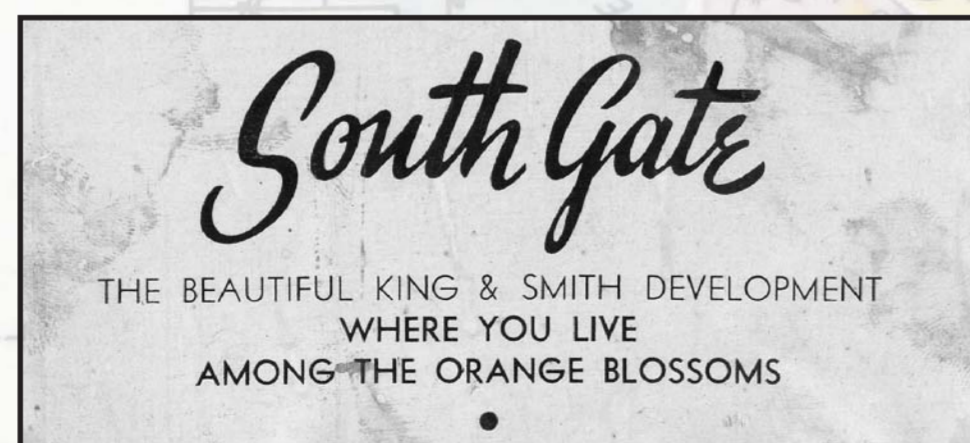


The South Gate Community House



Kensington Park main entrance

Between 1947 and 1957 the City of Sarasota's population doubled to an estimated 35,000. Some GI's who had trained in Sarasota County returned to the area to settle permanently, lured by the mild climate. The 1944 G. I. Bill of Rights provided low-interest loans with zero down payments for home purchases. Post War subdivisions added tens of thousands of homes to the existing inventory. Paver Park Estates, platted in 1950, was the first of these, shortly followed by Kensington Park and South Gate.



VETERANS	NON-VETERANS
NO DOWN PAYMENT	\$1250 DOWN
\$65.00 A MONTH	\$60.00 A MONTH

- 2 Bedrooms each with eight foot closets and built in chest of drawers.
- Full Ceramic Tile bathroom with colored fixtures.
- Formica counter tops, Natural Birchwood Kitchen cabinets - Matched grain.
- In-chamber heated oil heater with automatic blower and oil tank.
- Extra Glass paneled windows and doors throughout.
- Vinyl Plastic tiled floors.
- Large screened porch.
- Large utility room off kitchen.
- Two linen closets.
- 3 foot overhang all around house.
- Full size concrete carports.
- 7x100 landscaped terraced lot.
- Concrete driveway.
- Paved streets - gutters - city water.

PAVER PARK ESTATES
FIRST ADDITION

You will see this is a good deal, the same as others who have already bought. Limited amount of homes available. Full Price \$10,000.

How to go: 4 Blocks east of the New Sarasota Terrace Hotel on Ringling Blvd., turn right on Shade Ave. in office. Open 10:00-5:00 P.M.

Sarasota Herald-Tribune, April 5, 1954



Rockwell Lane, Sandy Hook

Modern subdivisions were developed at Lido Shores and Sandy Hook. Therein forward thinking developers like Phillip Hiss and Mary Rockwell Hook shared a vision to create enclaves of modern structures that took advantage of Sarasota's gentle sea breezes and were designed in a fashion that created a seamless transition between the indoors and out. Today this style is called the Sarasota School of Architecture and is one of our richest architectural legacies.



The Umbrella House, Lido Shores